

## Lighting



**Eik Lighting**  
eiklighting.com

An ideal match for a steampunk-inspired project, the Jonas Series features cast metal sockets, pipes and valve wheels fixed to a wood-accented backplate. Filament bulbs can be added for an authentic antique look.

Booth: 2775



**James de Wulf**  
jamesdewulf.com

Reminiscent of the long, meandering branches of a cherry blossom tree, this Falling Flowers chandelier provides a whimsical focal piece for any environment that has an abundance of vertical space.

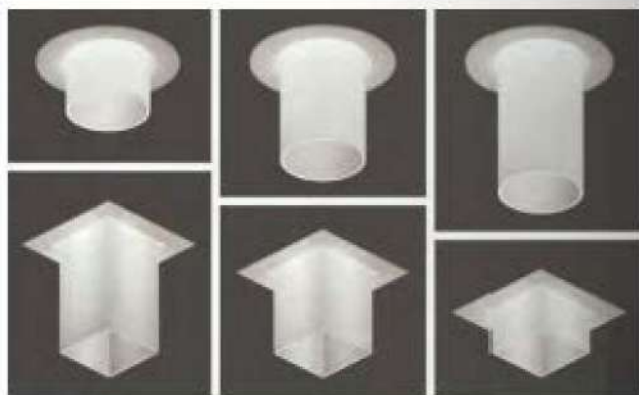
Not Exhibiting



**Lightblocks**  
lightblocks.com

Composed of a patented resin with a matte-finish coat, this company's customizable Designer Series (seen here in a personal zed project for engineering organization, ASME), can be customized with an array of colors to fit a multitude of uses.

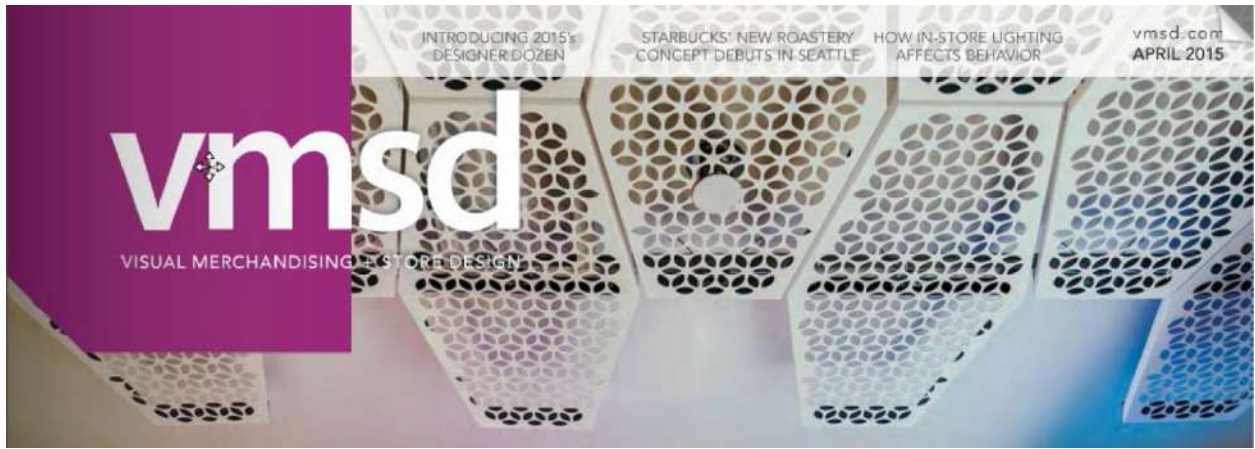
Not Exhibiting



**USA1 Lighting**  
usallighting.com

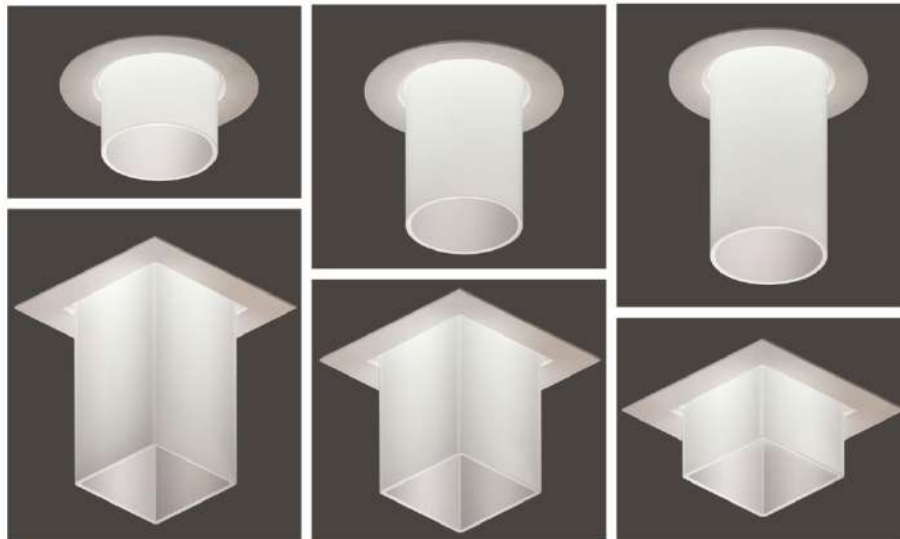
Reveal the light within! NanoLED Glow features decorative opal glass cylinders – available in square and round profiles – that extend 1.5- to 4-in. below the ceiling plane to emit a gentle, ambient light.

Booths: 607, 713



SHOWROOM

*Lighting*



**USA! Lighting**

**usailighting.com**

Reveal the light within! NanoLED Glow features decorative opal glass cylinders – available in square and round profiles – that extend 1.5- to 4-in. below the ceiling plane to emit a gentle, ambient light.

Booths: 607, 713



Reprinted from vmsd, April 2015

[http://www.nxtbook.com/nxtbooks/STMG/vmsd\\_201504/index.php#/50](http://www.nxtbook.com/nxtbooks/STMG/vmsd_201504/index.php#/50)